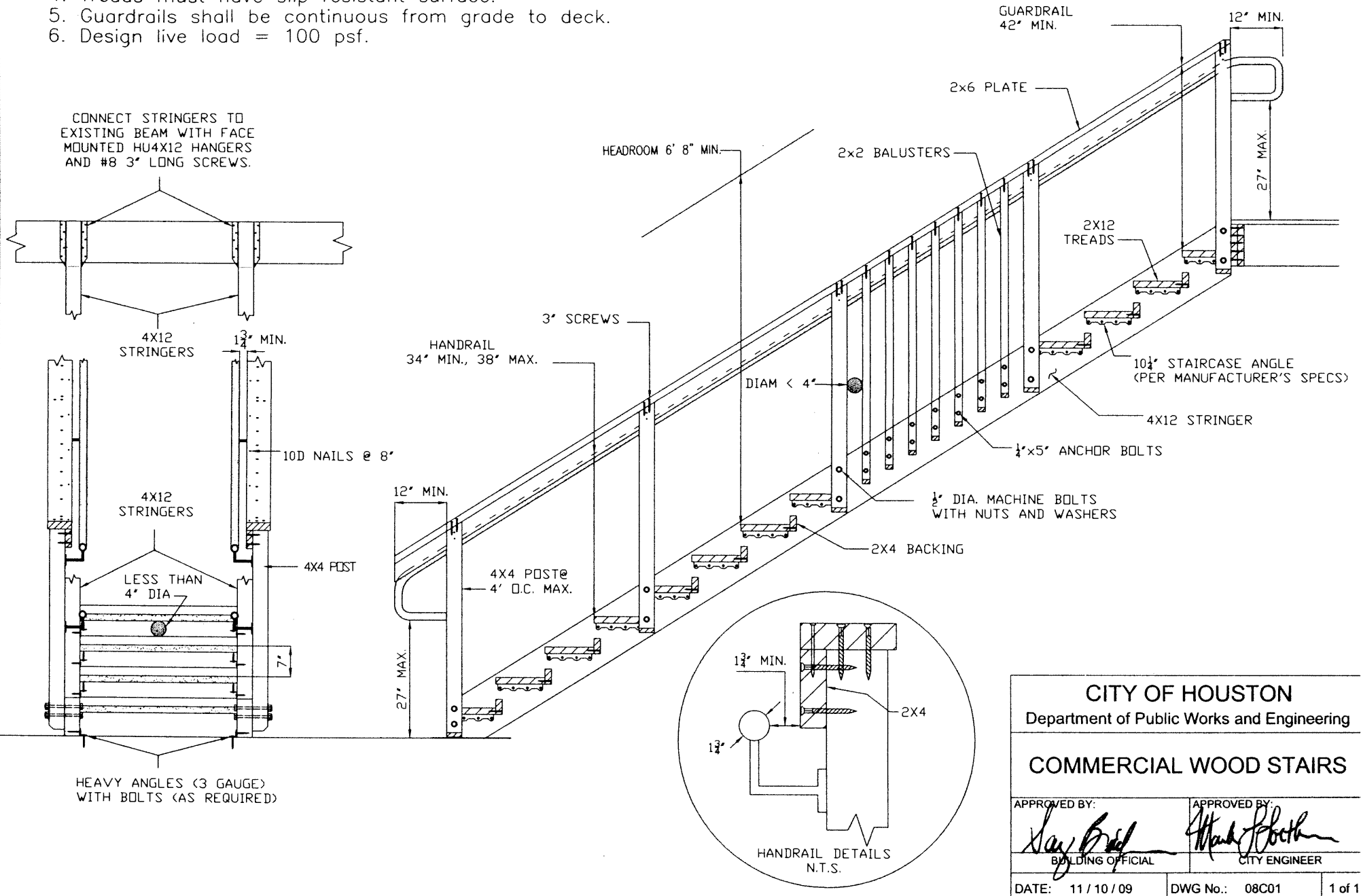


General Notes:

1. Use S.Y.P. # 2 or equivalent.
2. Stairway width = 36"
3. Stairs have 16 risers @ 7" and 16 treads @ 11 $\frac{1}{4}$ " (11" min)
4. Treads must have slip resistant surface.
5. Guardrails shall be continuous from grade to deck.
6. Design live load = 100 psf.



<b>CITY OF HOUSTON</b>	
Department of Public Works and Engineering	
<b>COMMERCIAL WOOD STAIRS</b>	
APPROVED BY: <i>Say Bird</i> BUILDING OFFICIAL	APPROVED BY: <i>Mark Booth</i> CITY ENGINEER
DATE: 11/10/09	DWG No.: 08C01
	1 of 1