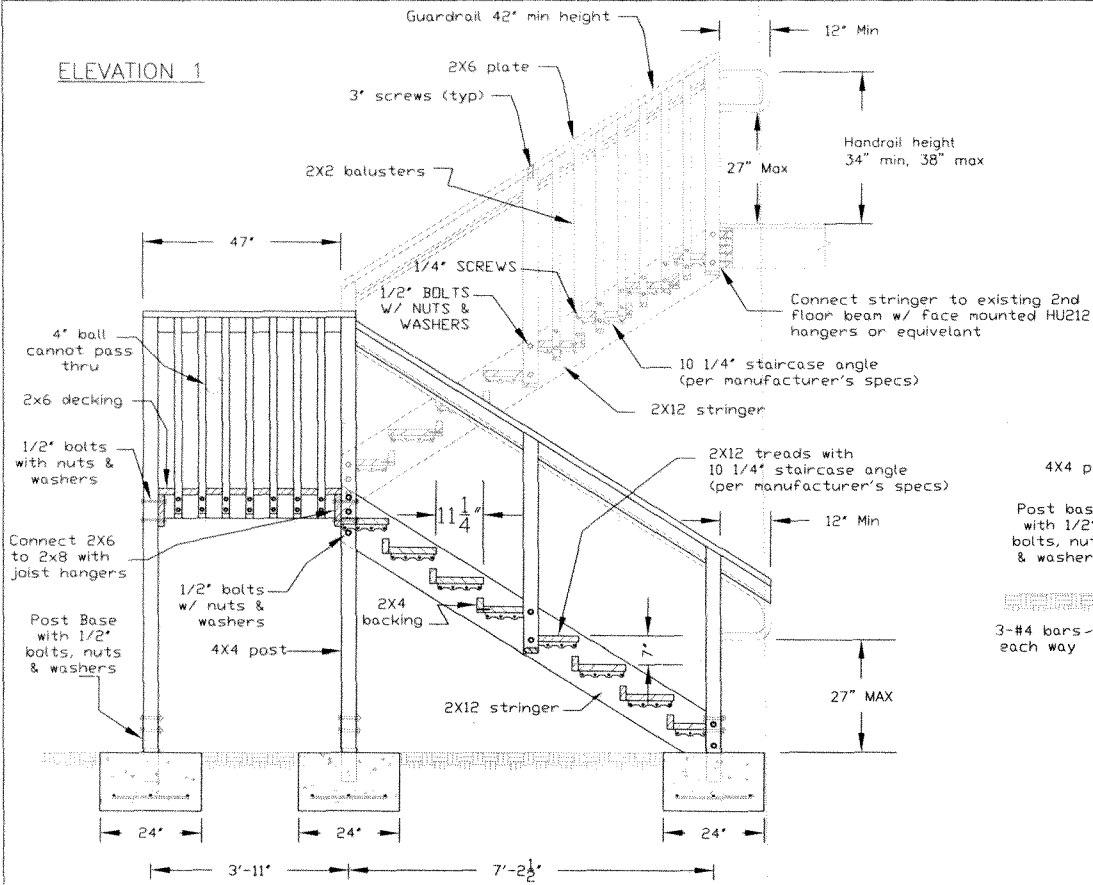
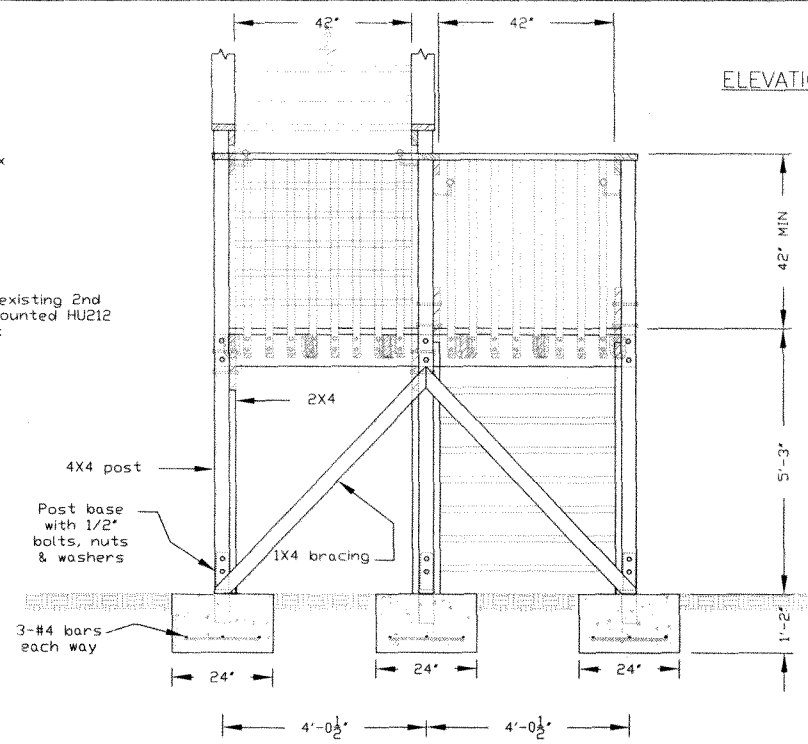


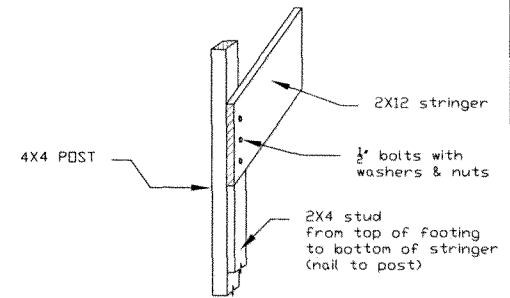
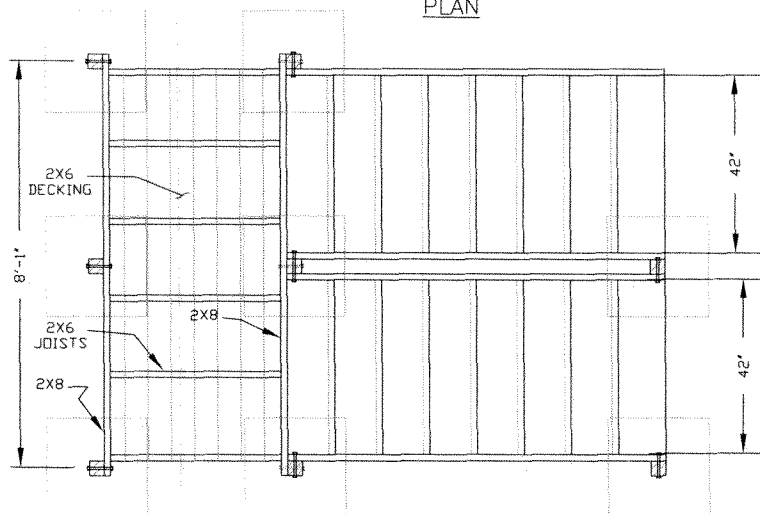
ELEVATION 1



ELEVATION 2

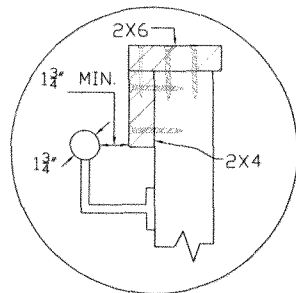


PLAN



STRINGER TO POST CONNECTION

HANDRAIL DETAILS



General Notes:

1. Use S.Y.P. # 2 or equivalent.
2. Stairway Width = 42".
3. Treads must have slip resistant surface.
4. Guardrails shall be continuous from grade to deck.
5. Design Live Load = 100 psf.
6. Concrete Compressive Strength = 2500 psi @ 28 days.
7. Reinforcing Steel: ASTM A615 Grade 60.

CITY OF HOUSTON

Department of Public Works and Engineering

Commercial Wood Stairs With Landing

Approved by:
Mark Speth
 Building Official

Approved by:
[Signature]
 City Engineer

Date: 11 / 2 / 11

Dwg No: 10-07-C

1 of 1