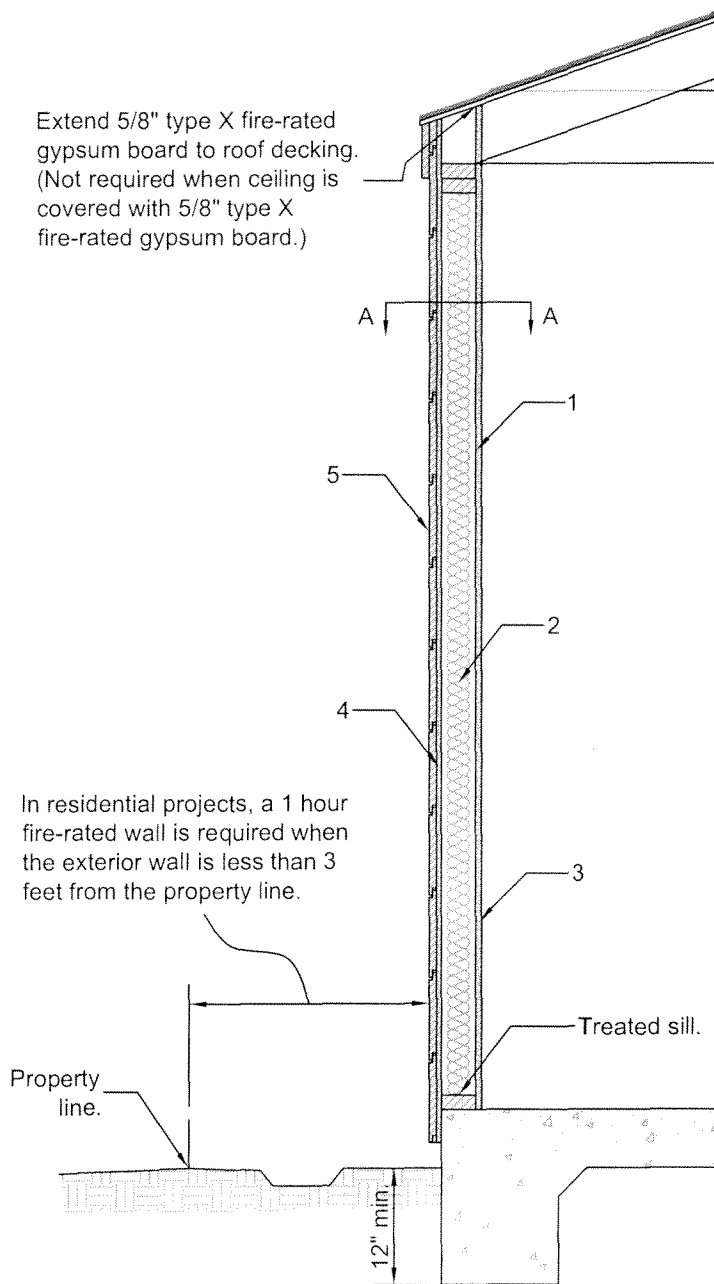


Extend 5/8" type X fire-rated gypsum board to roof decking.
(Not required when ceiling is covered with 5/8" type X fire-rated gypsum board.)

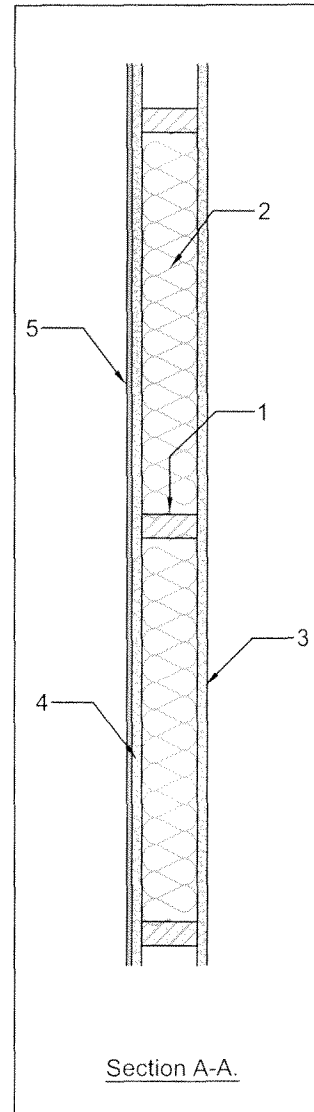


In residential projects, a 1 hour fire-rated wall is required when the exterior wall is less than 3 feet from the property line.

Property line.

Treated sill.

12" min.



Section A-A.

1. Wood Studs: Nominal 2" X 4" solid sawn wood studs, 24" on center max, with two top plates and a single bottom plate.
2. Insulation: R13 fiber glass batt insulation.
3. Gypsum Wallboard: 5/8" Type X gypsum wallboard 48" wide, oriented vertically and fastened with 1 3/4" long cup-head gypsum nails, spaced 7" on center at board edges and in field areas, or 1 1/2" Type S drywall screws, spaced 8" on center at board edges and in field areas of boards. The joints and nail heads require treatment consisting of joint compound followed by joint tape and a second layer of joint compound.
4. Gypsum Sheathing: 1/2" Type X or 5/8" Type X gypsum sheathing fastened with 1 3/4" long roofing nails spaced 7" on center in the field and 4" on center along the perimeter. Sheathing edge joints shall be staggered from those on opposite sides of the wall.
5. Fiber-Cement Exterior Siding: 5/16" thick Fiber-Cement lapsiding, applied horizontally with a 1 1/4" headlap and fastened with a single 6d corrosion resistant common nail driven through the lapped planks at each stud location.

CITY OF HOUSTON		
<i>Department of Public Works and Engineering</i>		
1 Hour Fire-Rated Wood Stud Exterior Wall		
Approved by: <i>Jan J. Casey</i> Building Official		
Date: 7 / 26 / 12	Dwg No: 12-04-R	1 of 1